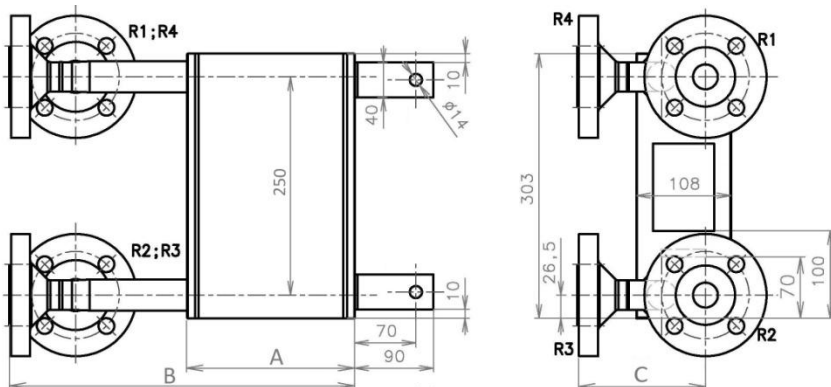


- It can be used for all liquids and vapors in the fields of chemical and pharmaceutical industries and in all other applications outside the operating limits of gasketed PHE's
- Welded stainless steel frame and bolt-in version, painted
- Chevron corrugation patterns
- Approval : PED97/23EC, ASME



Length A	50 to 340 mm
Length B	140 to 420 mm (343 to 623 mm)

Operating and Technical parameters	
Temperature	-40°C up to 250°C
Pressure	up to 25 bar and higher
Flow	up to 8,5 m ³ /h
Heat Transfer Surface	up to 2,7 m ²
Connection Sizes	DN 25 (1")
	Stud Bolts
	Aseptic Connections
	Flange
	Threaded
	Pipe thread

Plate Material	
Standard	1.4301 (AISI 304)
	1.4404 (AISI 316 L)
	1.4571 (AISI 316 Ti)
Special	1.4539 (AISI 904 L)
	1.4547 (SMO 254)
	Nickel Alloys
	Titan
	Titan-Pd

Frame	
	Painted Carbon Steel
	Stainless Steel

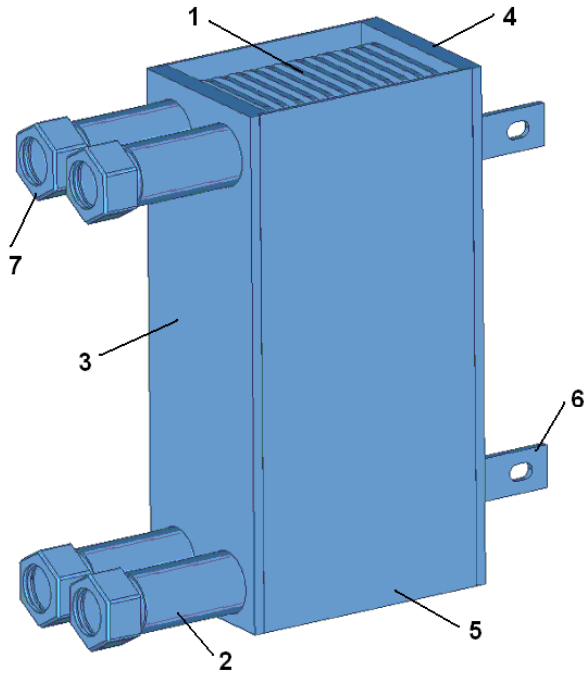
Connections	
Standard	1.4571 (AISI 316 Ti)
Special	Nickel Alloys
	Titan
	Titan-PD

Calculation is based on these parameters :

- Operating Temperature program
- Flow rate or Heatload
- Operating pressure, Allowable Pressure drop
- Flow medium or Physical properties

For the calculation of Heat Exchanger type, for the given application is a comprehensive software available. If necessary, Design of Heat Exchanger will be calculate immediately, available to be performed with high accuracy using our calculation tools, based on extensive thermodynamic and hydrodynamic measurements.





Complete Welded design

- 1. - Welded heat transfer plate packet
- 2. - Connections
- 3. - Front cover plate
- 4. - Back cover plate
- 5. - Side plate
- 6. - Hanger (Mounting eye)
- 7. - Counterflange (supplied on request)

Note:

Variants of shell and connecting is possible combine.

MARKING – CODES (Example)

Marking of Welded design: **WST03-80-1/1-VNP01**
 1 2 3 4 5

- 1. **WST** - type of heat exchanger
- 2. **03** - size of plate
- 3. **80** - number of heat transfer plate
- 4. **1/1** - number of passes (channel 1 / channel 2)
- 5. 1.pos. Pressure level
 - N** - up to 10 bara
 - V** - up to 25 bara
 - H** - more than 25 bara
- 2.pos. Material of shell
 - N** – shell of Austenitic Stainless steel (shot blasting - surface is polished with glass beads)
 - D** – shell of Duplex Stainless steel
 - C** – shell of Carbon steel - painted
- 3.pos Type of connection
 - A** – atypical (custom made) connection
 - P** – with Flanges
 - Z** – with Threaded connections
- 4.pos Additional information about Heat Exchanger (Welded neck flanges, rings with Grooves)

Detail of precise welds of plate-packet

